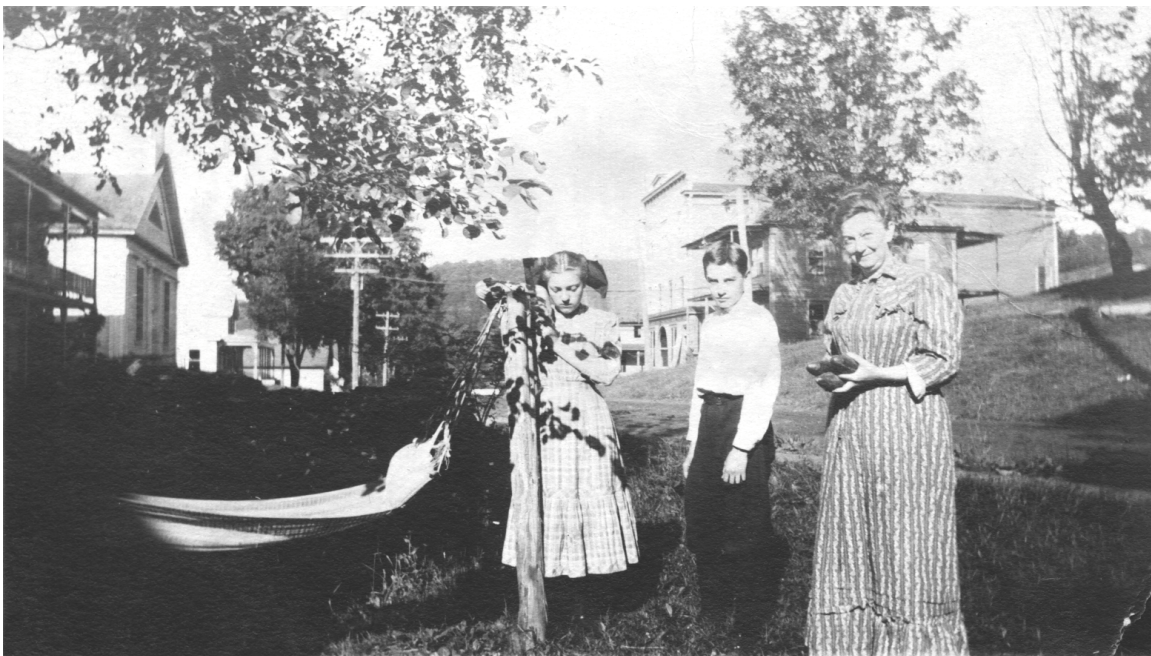


Emeroy Benton - Seamstress



Above: Uncle Charles Newton, Emeroy Benton, “Aunt Pru” (Prudence Smith) Newton, Lydia (Smith) Benton, and Cecil Town in front of Emeroy’s house about 1905. Emeroy operated a sewing business in the house for many years. She never married, but helped raise the two daughters of her sister Flora Shepard, who died young. When her father died in 1898, Emeroy’s mother Lydia came to live with her. The house is identified as P. Lee on the 1870 village map. For many years the water needed by the village school across the street was carried from Emeroy’s house in a pail.

Below: Emeroy (right) in her front yard with her nephew Cecil Town and Agnes Turbull about 1910.



Ned Thomas' Harness Shop



Edwin and Susan (Severance) Thomas, (right) in front of their home and shop at the top of the hill on Main St. before 1900.

This building (Post Office on the 1941 village map) was a barn until converted to a tin shop by James Hickie. In 1889, Ned and Susan Thomas, newly married, purchased it and altered it to suit their needs. They installed a harness shop and barber shop with bay windows downstairs and living quarters upstairs. The building burned in 1893, but Ned and Susan reconstructed it as before. It is said that the neighboring house, owned by Emeroy Benton, was protected from the flames by wet carpets hung between the two structures. Although Thomas was a barber and harness maker, he became town clerk and treasurer in 1910 and remained so until the time of his death in 1916. He converted a storage area in the rear of the building to an office space where the town records were kept. Thomas also

represented the town in the state legislature. When Ned died, his shops closed, and the space remained unused other than for occasional meetings of the Wa-Yu-Waste Women's Club, of which Susan was an active member. She was popular as a "watcher," who would stay overnight with sick people at no charge.

In 1935 the post office moved into the building, though Susan continued to live upstairs until her death in 1939. The building was acquired shortly thereafter by the postmaster, Arch Bullard. Although Chipp and Shirley Ennis acquired the building in 1947, the post office remained there until 1966 when the space was converted to an apartment. (From Gemma Yamamoto's *Catalog*)



Edwin A. and Susan (Severance) Thomas

